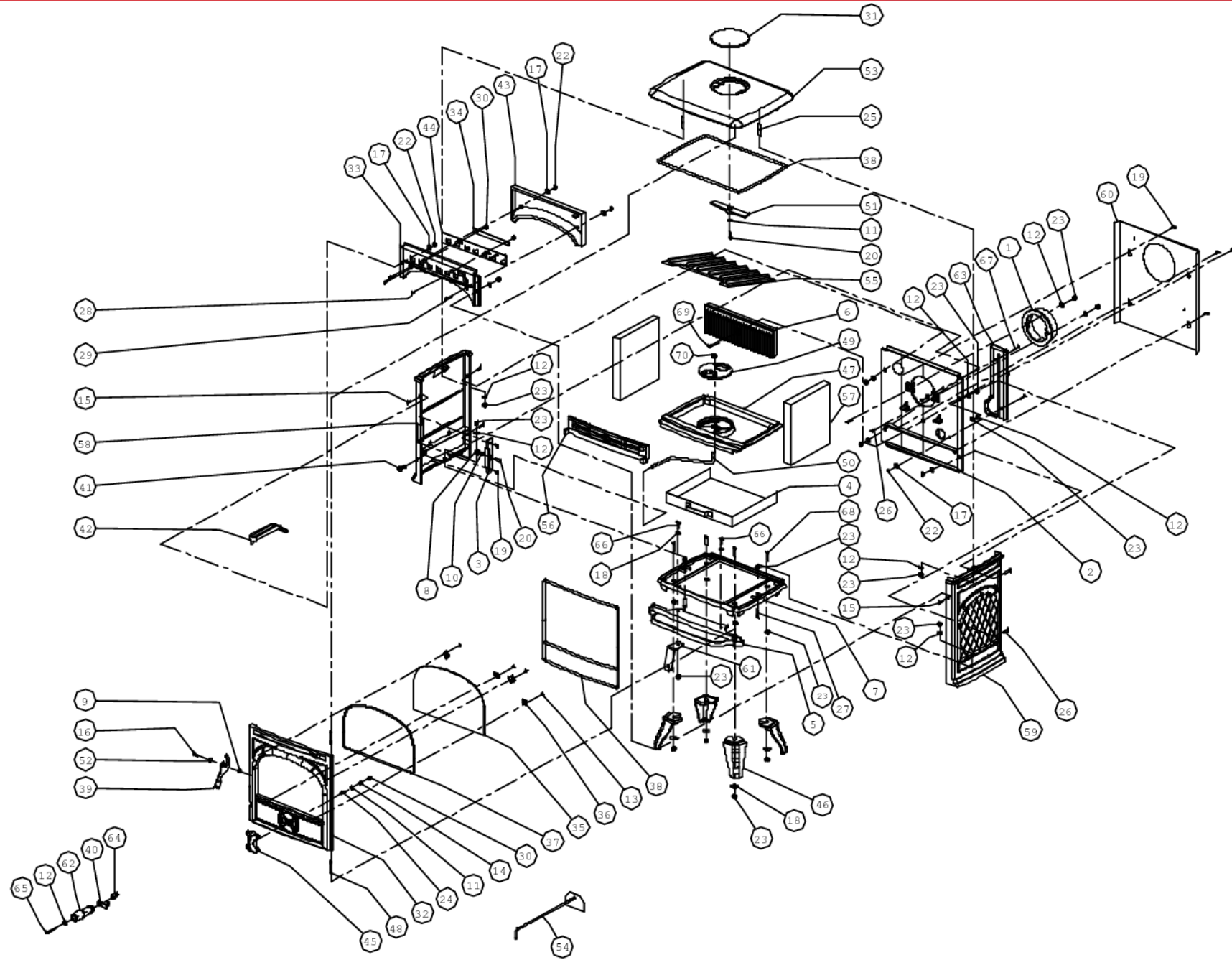




250CB



1	70.00357.020	AANSLUITKRAAG Ø125 UITW. 250CB 00357.0	BUSELOT Ø125 250CB 00357.0	FLUE COLLAR Ø125 OUTSIDE 250CB 00357.0	ANSCHLUSS STÜTZE Ø125 AUßERLICH 250CB 00357.0
2	72.02435.000	ACHTERWAND 250CB	PLAQUE ARRIERE 250CB	BACK PLATE 250CB	RÜCKWAND 250CB
3	03.03131.005	AFDEKPLAATJE 250	Plaque de couverture 250	COVER PLATE	ABDECKPLATTE 250
4	02.05220.000	ASLADE 250	BAC A CENDRES 250	ASHTRAY 250	ASLADE 250
5	70.05615.020	05615.0 ASVANG 250	05615.0 BAVETTE 250	05615.0 ASH LIP 250	05615.0 ASCHE FANGE 250
6	70.08337.000	BINNENPLAAT ACHTER 250CB	PLAQUE INTERIEUR ARRIÈRE 250CB	INNER BACK PLATE 250CB	INNEN PLATTE RÜCK SEITE 250CB
7	03.09367.102	BODEMPLAAT 250/HUNTINGDON	BODEMPLAAT 250/HUNTINGDON	BODEMPLAAT 250/HUNTINGDON	BODEMPLAAT 250/HUNTINGDON
8	70.13617.000	SET SLUITING 750/10 SERIE/20 SERIE	SET FERMETURE	SET LOCKING	SET VERSCHUSS
9	70.13612.000	10 ST BUSJE Ø12XØ8X3.5 13612.0	10 P TUBE Ø12XØ8X3.5 13612.0	10 PC BUSHING Ø12XØ8XØ3.5 13612.0	10 P BUECHSE Ø12XØ8XØ3.5 13612.0
10	70.13619.000	10 st BUSJE SLUITSTUK Ø10XØ6X8.5	10 p TUBE PIECE DE FERMETURE Ø10XØ6X8.5	10 pc BUSHING LATCH Ø10XØ6X8.5	10 st BÜCHSE VERSCHLUSS STÜCK Ø10XØ6X8.5
11	70.16501.000	10 ST D125 Ø6XØ12 SLUITRING	10 P RONDELLE D125 Ø6XØ12	10 PC WASHER D125 Ø6XØ12	10 ST D125 Ø6XØ12 UNTERLEGSCHIEBE
12	70.16502.000	10 ST D125 Ø8XØ17 SLUITRING - 16502.0	10 PC RONDELLE Ø8XØ17 - 16502.0	10 PC WASHER D125 Ø8XØ17 - 16502.0	10 ST D125 Ø8XØ17 UNTERLEGSCHIEBE - 16502.0
13	03.18101.041	D7516D M5 *NT GEBRUIKEN* NU 03.19801.041	VIS DIN 7516D M5x10	SCREW DIN 7516D M5x10	SCHRAUBE DIN 7516D M5x10
14	70.16601.000	10 ST Ø6 VEERRING GEWELFD	10 p RONDELLE DIN 137B Ø6	10 pc SPRING WASHER DIN 137B Ø6	10 st FEDERSCHIEBE DIN 137B Ø6
15	70.18602.041	10 st D7991 M6X20 VERZ.SCHR.BIZK GEZW VOLDR	10 p VIS DIN 7991 M6x20 NOIR	10 pc SCREW DIN 7991 M6x20 BLACK	10 st SCREW DIN 7991 M6x20 BLACK
16	70.18614.041	10 st SCHROEF DIN 7991 M8X20	10 p VIS DIN 7991 M8x20	10 pc SCREW DIN 7991 M8x20	10 st SCHRAUBE DIN 7991 M8x20
17	70.18701.000	10 st D9021A Ø6XØ18 SLUITRING	10 P RONDELLE DIN 9021A Ø6	10 PC WASHER DIN 9021A Ø6XØ18	10 st UNTERLEGSCHIEBE DIN 9021A Ø6XØ18
18	70.18710.000	10 st SLUITRING 8X25	10 p Ø8xØ25 RONDELLE	10 pc WASHER 8X25	10 st VERSCHUSS 8X25
19	70.19303.000	10 st D933 M6X12 GEZWART ZESKANTTAPBOUT	10 p BOULON DIN 933 M6x12	10 pc BOLT DIN 933 M6x12	10 st BOLZEN DIN 933 M6x12
20	70.19306.000	10 ST M6X25 ZESKANTTAPBOUT	10 p BOULON DIN 933 M6x25	10 pc BOLT DIN 933 M6x25	10 st BOLZEN DIN 933 M6x25
21	70.19312.000	10 ST D933 M8X20 ZESKANTTAPBOUT	10 p BOULON DIN 933 M8x20	10 pc BOLT DIN 933 M8x20	10 st BOLZEN DIN 933 M8x20
22	70.19410.000	10 st D934 M6 ZESKANTMOEREN	10 p ECROU DIN 934 M6	10 pc NUT DIN 934 M6	10 st MUTTER DIN 934 M6
23	70.19401.000	10 ST D934 M8 ZESKANTMOER 19401.0	10 P ECROU DIN 934 M8 19401.0	10 PC NUT DIN 934 M8 19401.0	10 ST MUTTER DIN 934 M8 19401.0
24	70.19502.000	10 st D939 M6X20 TAPEINDEN	10 p GOUJON DIN 939 M6x20	10 pc STUD DIN 939 M6x20	10 st STIFTSCHRAUBE DIN 939 M6x20
25	70.19508.000	10 st TAPEIND M8X25	10 p GOUJON DIN 939 M8X25	10 pc STUD DIN 939 M8X25	10 st STIFTSCHRAUBE DIN 939 M8X25
26	70.19701.000	10 st SCHROEF M8X25	10 p VIS M8X25	10 pc SCREW M8X25	10 st SCHRAUBE M8X25
27	70.19734.000	10 st D963 M8X35 PLATV.SCHR.ZGS#	10 p VIS DIN 963 M8x35	10 pc SCREW DIN 963 M8x35	10 st SCHRAUBE DIN 963 M8x35
28	70.20803.000	10 st D966 M6X20 BOLVERZ KK SCHROEF	10 p DIN 966 M6X20 VIS A METAUX	10 pc DIN 966 M6X20 SREW	10 st DIN 966 M6X20 SCHRAUBEN
29	70.20816.041	10 st D966 M6X35 GEZWART BOLVERZ KK	10 p D966 M6X35 VIS	10 pc D966 M6X35 SCREW	10 st D966 M6X35 SCREW
30	70.20001.000	10 st ZELFB.MOER CLEVELOCK	10 p M6 ECROU CLEVELOCK	10 pc LOCKING NUT DIN 980 M6	10 st SICHERUNGSMUTTER DIN 980 M6
31	70.15333.020	15333.0 DEKSEL 250 ANTRACIET	15333.0 COUVERCLE 250 ANTRACITE	15333.0 COVER 250 ANTRACITE	15333.0 DECKEL 250 ANTHRIZIT
32	03.15812.105	DEUR 250	DEUR 250	DOOR 250	DEUR 250
33	03.24392.000	FRONT 250	FRONT 250	FRONT 250	FRONT 250
34	72.25303.000	GELEIDINGSSTRIP 350CB	PIECE DE GUIDAGE 350CB	GUIDE 350CB	FÜHRUNGSBAND 350CB
35	70.26079.000	26079.0 GLAS 250 334X209.5X4 R	26079.0 VITRE CERAMIQUE 250	26079.0 CERAMIC GLASS 250	26079.0 GLASSCHIEBE 250
36	70.26101.041	4ST SET GLASBEV; 20X20MM	4PC SET FIXATION VITRE 20X20	4PC SET GLASS RETAINER 20X20	4ST SET GLAS BEHÄLTER 20X20
37	70.79870.000	SERVICE KIT 4.0M GLASVEZELKOORD 6MM - TU.SK6	SERVICE KIT 4.0M JOINT FIBRE CERAMIQUE 6MM - SK6	SERVICE KIT 4.0M GLASS FIBER ROPE 6MM -TU.SK6	SERVICE KIT 4.0M GLASFABER SCHNUR 6MM - TU.SK6
38	70.79869.000	SERVICE KIT 6.5M GLASVEZELKOORD 8MM - SK	SERVICE KIT 6.5M JOINT FIBRE CERAMIQUE 8MM - SK	SERVICE KIT 6.5M GLASS FIBER ROPE 8 MM - SK	SERVICE KIT 6.5M GLASFABER SCHNUR 8MM - SK
39	72.27022.000	GRENDL 250CB	POIGNEE 250CB	LATCH 250CB	VERRIEGELUNG 250CB
40	03.06107.041	BEDIENINGSBEUGEL GEZWART	PIECE SERVICE NOIR	OPERATING CLIP	BEDIENUNGSBÜGEL SCHWARZ
41	03.33043.000	KNOP SCHUDSTANG 250	KNOP SCHUDSTANG 250	KNOB SHAKING BAR 250	KNOP SCHUDSTANG 250
42	70.27226.020	SLT5-/01 KOUDE HAND ASBAK	SLT5-/01 MAIN FROIDE BAC A CENDRES3	SLT5-/01 COLD HAND ASHPAN	SLT5-/01 KALTE HAND ASCHENKASTE
43	03.37337.000	LUCHTGELEIDER 250	LUCHTGELEIDER 250	AIR DEFLECTOR 250	LUCHTGELEIDER 250
44	72.37937.000	LUCHTSCHUIF 350	REGLETTE D'AIR 350	DRAFT CONTROL 350	LUFTRIEGEL 350
45	70.37968.020	37968.0 LUCHTSCHUIF ONDER 250 ANTRACIET	37968.0 REGLETTE D'AIR DESSOUS 250 ANTRACITE	37968.0 DRAFT CONTROL UNDER 250 ANTRACITE	37968.0 LUFT SCHIEBER UNTER 250 ANTHRIZIT
46	70.52212.020	52212.0 POOT 250/425/725 ANTRACIET	52212.0 PIED 250/425/725 ANTRACITE	52212.0 LEG 250/425/725 ANTRACITE	52212.0 FUSS 250/425/725 ANTHRIZIT

47	70.56318.000	ROOSTERSTEUN 250CB	support de grille 250cb	grate support 250cb	250cb ROST BEHÄLTER
48	70.58610.000	10 st SCHARNIERPEN Ø6X45	10 pc PIVOT AVEC TETE Ø6X45	10 pc CLEVIS PIN Ø6X45	10 st GEWINDESTIFT OHNE KOPF
49	70.56238.000	56238.0 ROOSTER ASTROLINE	56238.0 GRILLE ASTROLINE	56238.0 GRATE ASTROLINE	56238.0 ROST ASTROLINE
50	70.61312.000	61312.0 SCHUDSTANG 250CB	61312.0 TIGE DE DECENDRAGE 250CB	61312.0 RIDDLING ROD 250CB	61312.0 RÜTTELSTANGE 250CB
51	70.07216.000	317G/02 SLUITPLAATJE VOOR DEKSEL 152 300-17G	317G/02 PLAQUETTE FERMETURE POUR COUVERCLE 300-17G	317G/02 LOCKING PLATE FOR COVER 300-17G	317G/02 VERSCHUSS PLATTE FÜR DECKEL 300-17G
52	70.64611.000	10 st SNELBORGER - 64611.0	10 pc RONDELLE A11 STARLOCK - 64611.0	10 pc WASHER A11 STARLOCK - 64611.0	10 st UNTERLEGSCHIEBE A11 STARLOCK - 64611.0
53	03.69158.205	TOPPLAAT 250	TOPPLAAT 250	TOP PLATE	TOP PLATTE 250
54	70.59201.000	TRS100 TREKSCHEPJE 100 (L = 335 MM)	TRS100 RACLOIR DE CARBON LONGUE 100	TRS100 COAL SCRAPER LONG 100	TRS100 KOHL SCHAUFFEL LANG 100
55	70.76150.000	76150.0 VLAMPLAAT 250CB	76150.0 DEFLECTEUR 250 CB	76150.0 BAFFLE PLATE 250 CB	76150.0 FLAMLEITPLATTE 250 CB
56	70.77043.020	77043.0 VUURKORF 250	77043.0 CORBEILLE 250	77043.0 LOG RETAINER 250	77043.0 STEHRÖST 250
57	70.77341.000	77341.0 VERMICULIET STEEN 250 CB	77341.0 PIERRE REFRACTAIRE 250CB	77341.0 FIREBRICK 250CB	77341.0 STEIN VERMICULIET 250CB
58	03.79558.205	ZIJWAND L 250	ZIJWAND L 250	SIDE L 250	SEITENWAND L 250
59	03.79559.005	ZIJWAND R 250	ZIJWAND R 250	ZIJWAND R 250	ZIJWAND R 250
60	03.28069.000	HITTESCHILD RUG 250	ECRAN THERMIQUE DOS	HEAT SHIELD BACK 250	HITZENSCHILD RÜCKEN 250
61	03.27301.000	HANDGREEPHOUDER 500	FIXATION POIGNEE	HANDLE HOLDER	HANDGREEPHOUDER 500
62	70.27507.000	SET HOUTEN HANDVAT(ALLERLEI KACHELS+INSERTS) ZWART	SET POIGNÉE BOIS(POÊLES+INSERTS) NOIR	COMPLETE HANDLE WOOD(STOVES+INSERTS) BLACK	COMPLETT GRIFF HOLZ(ÖFEN+EINSATZ) SCHWARZ
63	03.37630.005	LUCHTKOKER 250CB	LUCHTKOKER 250CB	LUCHTKOKER 250CB	LUCHTKOKER 250CB
64	03.46527.041	OPVULSTUK GEZWART 450/750 *Z	CONNECTION PI&CE	CONNECTOR PIECE	TEIL FUER TUERGRIFF
65	70.20307.000	10 st SCHROEF M8X50	10 p VIS M8X50	10 pc SCREW M8X50	10 st SCHRAUBE M8X50
66	70.19316.000	10 st ZESKANT TAPBOUT M8X40	10 p BOULON DIN 933 M8X40	10 pc BOLT DIN 933 M8x40	10 st BOLZEN DIN 933 M8x40
67	70.19717.000	10 st D963 M6X30 PLATV.SCHR.ZGS	10 p D963 M6X30 PLATV.SCHR.ZGS	10 pc SCREW DIN 963 M6x30	10 st SCHRAUBE DIN 963 M6x30
68	70.19735.000	10 ST D963 M8X40 PLATV.SCHR.ZGS	10 p VIS M8X40	10 pc SCREW M8X40	10 st SCHRAUBE DIN 963 M8x20
69	03.19736.000	D963 M8X50 PLATV.SCHR.ZGS *	VIS DIN 963 M8x50	SCREW DIN 963 M8x50	SCHRAUBE DIN 963 M8x50
70	70.20010.000	10 ST D980 M8 ZELFB.MOER CLEVELOCK 20010.0	10 P ECROU DE VERROUILLAGE DIN 980 M8 20010.0	10 PC LOCKING NUT DIN 980 M8 20010.0	10 ST SICHERUNGSMUTTER DIN 980 M8 20010.0