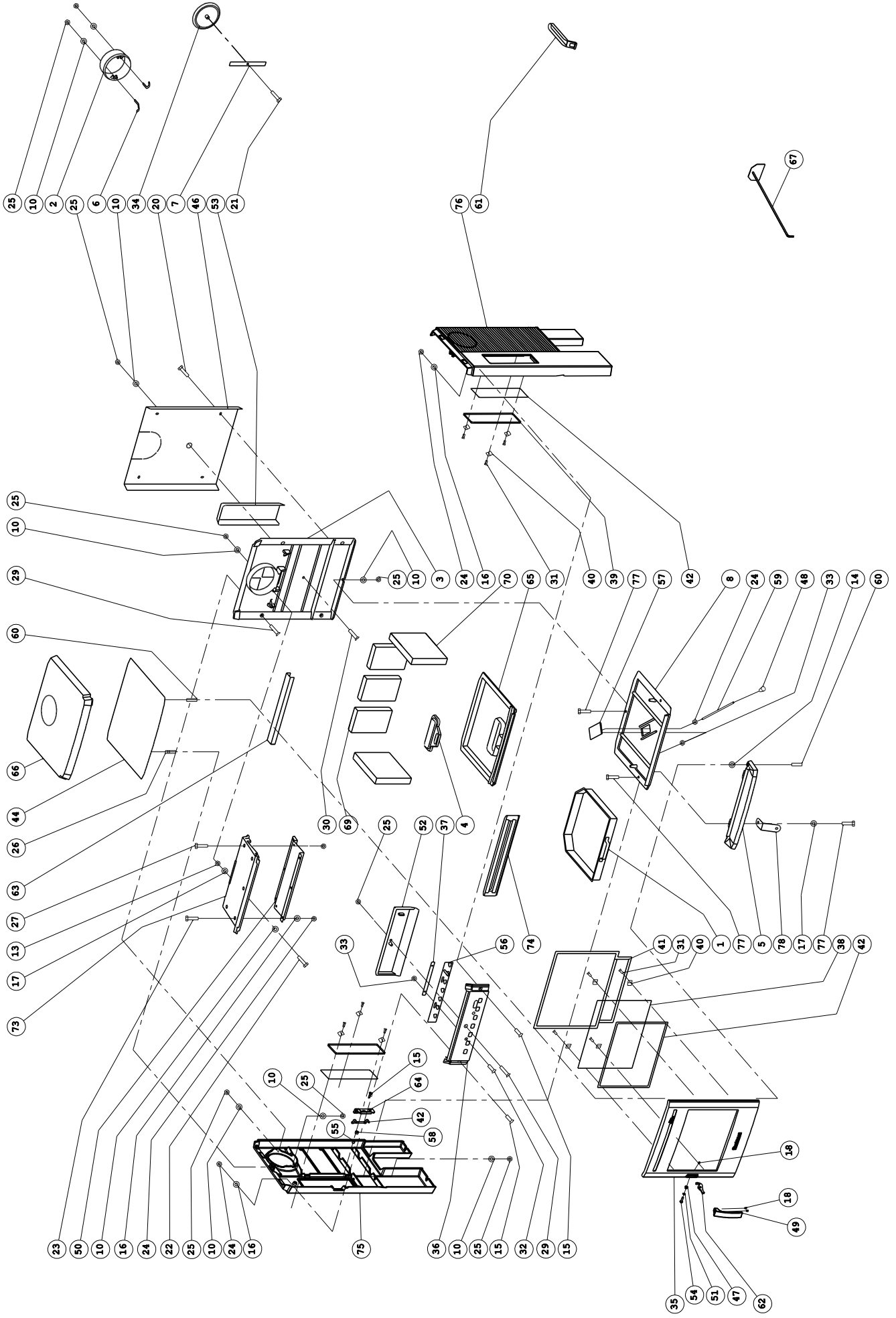




01.93736.000 | 14/03/14

350CB/3



1	70.05215.000	806 ASLADE 2000/2100/2200 ASL.806	806 BAC A CENDRES 2000/2100/2200 ASL.806	806 ASH BOX2000/2100/2200 ASL.806	806 ASCHENKASTEN 2000/2100/2200 ASL.806
2	70.00326.020	00326.0 AANSLUITKRAAG Ø125 UITW. 40CB	00326.0 BUSELOT Ø125 EXTÉRIEUR	00326.0 FLUE COLLAR Ø125 OUTSIDE	00326.0 ANSCHLUSS STÜTZE Ø125 AUßERLICH
3	03.02420.105	ACHTERWAND 350CB	PLAQUE ARRIÈRE 350CB	BACK 350CB	RÜCKWAND 350CB
4	70.05402.020	05402.0 ASLUIK 350 CB	05402.0 VOLET CENDRIER 350 CB	05402.0 DE-ASHING COVER 350 CB	05402.0 ASCHE LUKE 350 CB
5	03.05606.305	ASVANG 350CB	BAVETTE	ASH LIP	ASCHE FANGE 350CB
6	70.07107.000	2 st BEVESTEGINGSBEUGEL KRAAG	2 p 07107.1 PIECE DE CONNEXION BUSE	2 pc07107.1 CONNECTING PIECE COLLAR	2 st 07107.1 BEFESTIGUNGSCLIP
7	70.07412.000	07412.0 BEVESTINGSPLAAT	07412.0 PLAQUETTE DE FIXATION	07412.0 FIXING PLATE	07412.0 BEFESTIGUNGS PLATTE
8	03.09341.305	BODEMPLAAT 350CB	PLAQUE DE SOL 350CB	BOTTOM	BODEN PLATTE 350CB
10	70.16502.000	10 ST D125 Ø8XØ17 SLUITRING - 16502.0	10 PC RONDELLE Ø8XØ17 - 16502.0	10 PC WASHER D125 Ø8XØ17 - 16502.0	10 ST D125 Ø8XØ17 UNTERLEGSCHIEBE - 16502.0
13	70.79866.000	Z366 : SLUITNOK PRELUDE	Z366 : TIGE DE FERMETURE PRELUDE	Z366 : LOCKING PIN PRELUDE	Z366 : SPERRBOLZEN PRELUDE
14	70.17901.000	10 st D7349 Ø6,4XØ17X3 SLUITRING DIK	10 p ROND. D7349 Ø6,4xØ17x3	10 pc WASHER D7349 Ø6,4xØ17x3	10 st UNTERL.SCH.D7349 Ø6,4xØ17x3
15	70.18604.041	10 st D7991 M6X25 VERZ.SCHR.BIZK GEZW VOL DR.	10 p VIS DIN 7991 M6x25 NOIR	10 pc SCREW DIN 7991 M6x25 BLACK	10 st SCHRAUBE DIN 7991 M6x25 SCHWARZ
16	70.18701.000	10 st D9021A Ø6XØ18 SLUITRING	10 P RONDELLE DIN 9021A Ø6	10 PC WASHER DIN 9021A Ø6XØ18	10 st UNTERLEGSCHIEBE DIN 9021A Ø6XØ18
17	70.18710.000	10 st SLUITRING 8X25	10 p Ø8xØ25 RONDELLE	10 pc WASHER 8X25	10 st VERSCHUSS 8X25
18	70.21701.041	10 st D916 M6X6 STELSCHR.BI ZESK	10 p VIS DIN 916 M6X6	10 pc SCREW DIN 916 M6X6	10 st GEWINDESTIFTE DIN 916 M6X6
20	70.19303.000	10 st D933 M6X12 GEZWART ZESKANTTABOUT	10 p BOULON DIN 933 M6x12	10 pc BOLT DIN 933 M6x12	10 st BOLZEN DIN 933 M6x12
21	70.19306.000	10 ST M6X25 ZESKANTTABOUT	10 p BOULON DIN 933 M6x25	10 pc BOLT DIN 933 M6x25	10 st BOLZEN DIN 933 M6x25
22	70.19320.000	10 st ZESKANT TABOUT M8X60	10 p BOULON DIN 933 M8x60	10 pc BOLT DIN 933 M8x60	10 st BOLZEN DIN 933 M8x60
23	70.19712.000	10 st D963 M6X16 PLATV.SCHR.ZGS	10 p VIS DIN 963 M6x16	10 pc SCREW DIN 963 M6x16	10 st SCHRAUBE DIN 963 M6x16
24	70.19410.000	10 st D934 M6 ZESKANTMOEREN	10 p ECROU DIN 934 M6	10 pc NUT DIN 934 M6	10 st MUTTER DIN 934 M6
25	70.19401.000	10 ST D934 M8 ZESKANTMOER 19401.0	10 P ECROU DIN 934 M8 19401.0	10 PC NUT DIN 934 M8 19401.0	10 ST MUTTER DIN 934 M8 19401.0
26	70.19508.000	10 st TAPEIND M8X25	10 p GOUJON DIN 939 M8X25	10 pc STUD DIN 939 M8X25	10 st STIFTSCHRAUBE DIN 939 M8X25
27	70.19716.000	10 ST D963 M6X25 PLATV.SCHR.ZGS - 19716.0	10 p VIS DIN 963 M6x25 - 19716.0	10 pc SCREW DIN 963 M6x25 - 19716.0	10 st SCHRAUBE DIN 963 M6x25 - 19716.0
30	03.19736.000	D963 M8X50 PLATV.SCHR.ZGS *	VIS DIN 963 M8x50	SCREW DIN 963 M8x50	SCHRAUBE DIN 963 M8x50
31	70.19801.041	10 st M5X10 PLATV.SCHR.KK ZWART 4.6	10 p VIS DIN 965 M5x10 NOIR	10 pc SCREW DIN 965 M5x10 BLACK	10 st SCHRAUBE DIN 965 M5x10 SCHWARZ
32	70.20803.000	10 st D966 M6X20 BOLVERZ KK SCHROEF	10 p DIN 966 M6X20 VIS A METAUX	10 pc DIN 966 M6X20 SREW	10 st DIN 966 M6X20 SCHRAUBEN
33	70.20001.000	10 st ZELFB.MOER CLEVELOCK	10 p M6 ECROU CLEVELOCK	10 pc LOCKING NUT DIN 980 M6	10 st SICHERUNGSMUTTER DIN 980 M6
34	70.15316.020	15316.0 DEKSEL 40CB	15316.0 COUVERCLE ROND 40CB	15316.0 COVER 40CB (ROUND)	15316.0 DECKEL RUND 40 CB
35	03.15963.005	DEUR 350CB/3	PORTE 350CB/3	DOOR 350CB/3	DEUR 350CB/3
36	03.24355.200	FRONT 350CB	FACADE 350CB	FRONT 350CB	FRONT 350CB
37	72.25303.000	GELEIDINGSSTRIP 350CB	PIECE DE GUIDAGE 350CB	GUIDE 350CB	FÜHRUNGSBAND 350CB
38	70.26058.000	26058.0 GLAS 350CB 342X273X4	26058.0 VITRE CERAMIQUE 350CB	26058.0 CERAMIC GLASS 350CB	26058.0 GLASSCHIEBE 350CB
39	70.26321.000	GLAS ZIJWAND 350CB/3-360CB/3 (92X276X4)	VITRE CERAMIQUE 350CB3-360CB3 (92X276X4)	CERAMIC GLASS 350CB3-360CB3	GLAS SEITE 350CB3-360CB/3 (92X276X4)
40	70.26101.041	4ST SET GLASBEV; 20X20MM	4PC SET FIXATION VITRE 20X20	4PC SET GLASS RETAINER 20X20	4ST SET GLAS BEHÄLTER 20X20
41	70.79922.000	Z422 : GLASVEZELKOORD 10 MM KOORD-10	S422 : JOINT FIBRE CERAMIQUE 10 MM KOORD-10	B422 : GLASS FIBER ROPE 10 MM KOORD-10	S422 : GLASFASER SCHNUR 10 MM KOORD-10
42	70.79920.000	Z420 : SERVICEKIT KOORD 5 MM	S420 : SERVICE-KIT JOINT 5MM	B420 : SERVICE-KIT ROPE 5MM	S420 : SERVICE-KIT SCHNUR 5MM
44	70.79869.000	SERVICE KIT 6.5M GLASVEZELKOORD 8MM - SK	SERVICE KIT 6.5M JOINT FIBRE CERAMIQUE 8MM - SK	SERVICE KIT 6.5M GLASS FIBER ROPE 8 MM - SK	SERVICE KIT 6.5M GLASFABER SCHNUR 8MM - SK
46	03.28038.100	HITTESCHILD RUG 350CB	PLAQUE DE PROTECTION 350CB	HEATSHIELD 350CB	HITZESCHILD RÜCKWAND 350CB
47	70.13644.041	10 ST BUS SLUIT.250/425/725 (Ø11.5XØ9X7.4) ZW.	10 P TUBE PAUMELLE FERMETUR 250/425/725 (Ø11.5XØ9)	10 PC BUSHING LATCH	10 ST ABSTANDSHALTER VERSCHLUSS 250/425/725 (Ø11.5)
48	70.33020.020	33020.0 KNOP GG 2510S	33020.0 BOUTON 2510S	33020.0 KNOB DRAFT CONTROL 2510S	33020.0 KNOPF 2510S
49	70.27028.000	GRENDDEL LOGASTYLE 30	LOQUET LOGASTYLE 30	LOCK LOGASTYLE 30	GRIFF LOGASTYLE 30
50	03.37215.000	LUCHTDOORLAAT 350CB	CONDUIT D'AIR 350CB	AIR INLET 350CB	LUFT PLATTE 350CB
51	70.16601.000	10 ST Ø6 VEERRING GEWELFD	10 p RONDELLE DIN 137B Ø6	10 pc SPRING WASHER DIN 137B Ø6	10 st FEDERSCHIEBE DIN 137B Ø6
52	72.37329.000	LUCHTGELEIDER 350CB	CONDUIT D'AIR 350CB	AIR DEFLECTOR 350CB	LUFTLEITUNG 350CB
53	03.37603.000	LUCHTKOKER SEC.LUCHT 700	BOITE D'AIR SECOND. 700	AIRDUCT SEC.AIR	LUFT KANAL 700
54	03.20315.041	D7985 M6X20 GEZW BOLCIL KK SCH *	VIS DIN 7985 M6X20	SCREW DIN 7985 M6X20	SCHRAUBE DIN 7985 M6X20

55	70.13619.000	10 st BUSJE SLUITSTUK Ø10XØ6X8.5	10 p TUBE PIECE DE FERMETURE Ø10XØ6X8.5	10 pc BUSHING LATCH Ø10XØ6X8.5	10 st BÜCHSE VERSCHLUSS STÜCK Ø10XØ6X8.5
56	72.37937.000	LUCHTSCHUIF 350	REGLETTE D'AIR 350	DRAFT CONTROL 350	LUFTRIEGEL 350
57	03.37938.005	LUCHTSCHUIF ONDER 350CB	REGLETTE D'AIR DESSOUS 350CB	DRAFT CONTROL UNDER 350CB	LUFTREGLER UNTEN 350CB
58	70.13623.041	10 st BUSJE Ø13 XØ10 X7.5 GEZWART	10 p TUBE Ø13XØ10X7.5	10 pc BUSHING Ø13XØ10X7.5	10 st BÜCHSE Ø13XØ10X7.5
59	03.65410.100	REGELSTANG LUCHTSCHUIF 350CB	TIGE DE COMMANDE REGLETTE D'AIR 350CB	REGULATING ROD AIR SLIDE 350	GESTÄNGE LUFTREGLER 350CB
60	70.58610.000	10 st SCHARNIERPEN Ø6X45	10 pc PIVOT AVEC TETE Ø6X45	10 pc CLEVIS PIN Ø6X45	10 st GEWINDESTIFT OHNE KOPF
61	70.27226.020	SLT5-/01 KOUDE HAND ASBAK	SLT5-/01 MAIN FROIDE BAC A CENDRES3	SLT5-/01 COLD HAND ASHPAN	SLT5-/01 KALTE HAND ASCHENKASTE
62	03.64299.000	SLUITSTUK 350/360	SLUITSTUK 350/360	SLUITSTUK 350/360	VERSCHLUSSTEIL
63	70.29008.000	STEENHOUDER 350CB/3	GARDE BUCHES 350CB/3	support stone 350cb/3	STEINBEHÄLTER 350CB/3
64	03.03173.001	AFDEKPLAATJE SLUITING	PLAQUE DE COUVERTURE	AFDEKPLAATJE SLUITING	AFDEKPLAATJE SLUITING
65	70.66507.000	STOOKROOSTER 350CB	GRILLE 350CB	grate 350cb	ROST 350CB
66	03.69129.205	TOPPLAAT 350CB	PLATEAU SUPERIEUR 350CB	TOPPLATE 350CB	TOP PLATTE 350CB
67	70.59209.000	TREKSCHEPJE 600	RACLOIR 600	SCRAPER 600	SCHÜREISEN 600
69	70.77384.000	VERMICULIET STEEN 250/350/360/500	PLAQUE VERMICULITE 250/350/360/500	VERMICULITE STONE 250/350/360/500	STEIN VERMICULITE 250/350/360/500
70	70.77366.000	VERMICULIET ZIJSTEEN 350CB/3-360CB/3	PIERRE VERMICULITE 350CB3-360CB3	VERMICULITE STONE 350CB/3-360CB/3	STEIN VERMICULIET 350CB/3-360CB/3
73	70.76118.000	VLAMPLAAT 350CB GEMONT.	COUPE FLAMMES 350CB 76118.0	BAFFLE PLATE 350CB 76118.0	FLAMMLEITPLATTE 350CB MONTIERT
74	70.77082.020	VUURKORF 350CB/3	GARDE BUCHES 350CB/3	LOG RETAINER 350CB/3	STEHROST 350CB/3
75	03.79244.005	ZIJWAND LINKS MET GLAS LOGASTYLE 30	LATERALE GAUCHE AVEC VITRE	SIDE LEFT WITH GLASS	ZIJWAND LINKS MET GLAS LOGASTYLE 30
76	03.79212.106	ZIJWAND RECHTS MET GLAS 350CB	PLAQUE LATERALE DROITE 350CB	SIDE PLATE RIGHT 350CB	ZIJWAND RECHTS MET GLAS 350CB
77	70.19313.000	10 ST D933 M8X25 ZESKANTTAPBOUT *	10 P BOULON DIN 933 M8x25	10 PC BOLT DIN 933 M8x25	10 ST BOLZEN DIN 933 M8x25