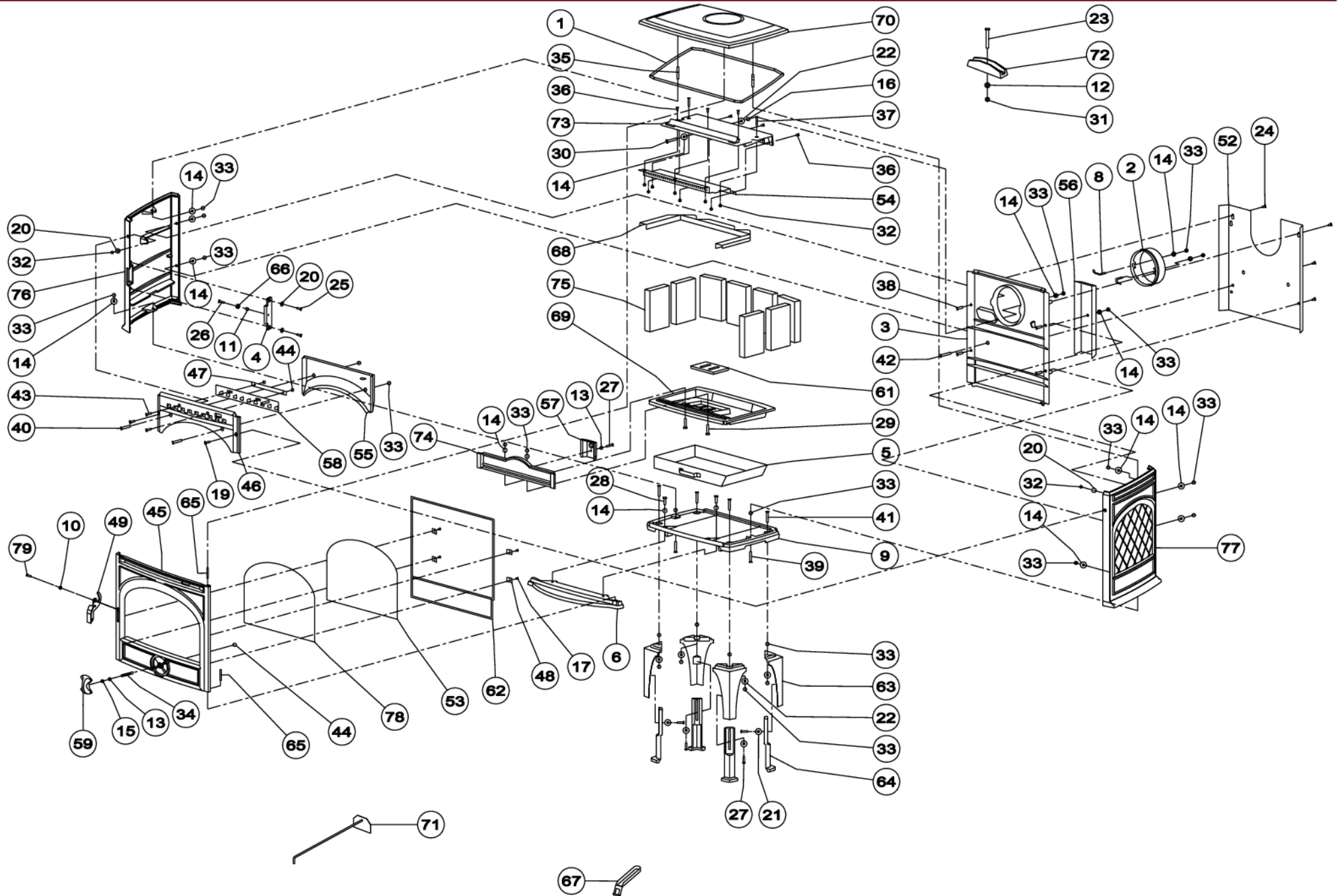




09.94312.000

| 01/04/04

425CB



1	70.79869.000	SERVICE KIT 6.5M GLASVEZELKOORD 8MM - SK	SERVICE KIT 6.5M JOINT FIBRE CERAMIQUE 8MM - SK	SERVICE KIT 6.5M GLASS FIBER ROPE 8 MM - SK	SERVICE KIT 6.5M GLASFABER SCHNUR 8MM - SK
2	70.00341.020	00341.0 AANSLUITKRAAG Ø150 UITW.	00341.0 BUSELOT Ø150 EXTÉRIEUR	00341.0 FLUE COLLAR Ø150 OUTSIDE	00341.0 ANSCHLUSS STÜTZE Ø150 AUßERLICH
3	03.02429.020	ACHTERWAND 550CB ANTRACIET	ACHTERWAND 550CB ANTRACIET	BACK PLATE 550CB	ACHTERWAND 550CB ANTRACIET
4	03.03132.020	AFDEKPLAATJE 425CB/GM ANTRACIET	AFDEKPLAATJE 425CB/GM ANTRACIET	COVER PLATE 425CB/GM	AFDEKPLAATJE 425CB/GM ANTRACIET
5	70.05201.000	05201.0 ASLADE FOCUS, 900G	05201.0 bac a cendres focus 900g	05201.0 ach box focus 900g	05201.0 achenkasten focus 900g
6	03.05616.092	ASVANG 425CB/GM E7	Bavette 425CB/GM E7	ASHLIP 425CB/GM E7	ASCHELIPPE 425CB/GM E7
8	70.07107.000	2 st BEVESTEGINGSBEUGEL KRAAG	2 p 07107.1 PIECE DE CONNECTION BUSE	2 pc07107.1 CONNECTING PIECE COLLAR	2 st 07107.1 BEFESTIGUNGSCLIP
9	03.09359.005	BODEMPLAAT 550CB	BODEMPLAAT 550CB	BODEMPLAAT 550CB	BODEMPLAAT 550CB
10	70.13644.041	10 ST BUS SLUIT.250/425/725 (Ø11.5XØ9X7.4) ZW.	10 P TUBE PAUMELLE FERMETUR 250/425/725 (Ø11.5XØ9	10 PC BUSHING LATCH	10 ST ABSTANDSHALTER VERSCHLUSS 250/425/725 (Ø11.5
11	70.13623.041	10 st BUSJE Ø13 XØ10 X7.5 GEZWART	10 p TUBE Ø13XØ10X7.5	10 pc BUSHING Ø13XØ10X7.5	10 st BÜCHSE Ø13XØ10X7.5
12	70.16503.000	10 st SLUITRING 10X21	10 p RONDELLE 10X21	10 pc WASHER 10X21	10 st VERSCHUSS 10X21
13	70.16501.000	10 ST D125 Ø6XØ12 SLUITRING	10 P RONDELLE D125 Ø6XØ12	10 PC WASHER D125 Ø6XØ12	10 ST D125 Ø6XØ12 UNTERLEGSCHEIBE
14	70.16502.000	10 ST D125 Ø8XØ17 SLUITRING - 16502.0	10 PC RONDELLE Ø8XØ17 - 16502.0	10 PC WASHER D125 Ø8XØ17 - 16502.0	10 ST D125 Ø8XØ17 UNTERLEGSCHEIBE - 16502.0
15	70.16601.000	10 ST Ø6 VEERRING GEWELFD	10 p RONDELLE DIN 137B Ø6	10 pc SPRING WASHER DIN 137B Ø6	10 st FEDERSCHEIBE DIN 137B Ø6
16	70.17102.000	10 st D439 M8 LAGE ZESKANTMOER - 17102.0	10 p ECROU DIN 439 M8 - 17102.0	10 pc NUT DIN 439 M8 -17102.0	10 st MUTTER DIN439 M8 - 17102.0
17	03.18101.041	D7516D M5 *NT GEBRUIKEN* NU 03.19801.041	VIS DIN 7516D M5x10	SCREW DIN 7516D M5x10	SCHRAUBE DIN 7516D M5x10
19	70.18602.041	10 st D7991 M6X20 VERZ.SCHR.BIZK GEZW VOLDR	10 p VIS DIN 7991 M6x20 NOIR	10 pc SCREW DIN 7991 M6x20 BLACK	10 st SCREW DIN 7991 M6x20 BLACK
20	70.18701.000	10 st D9021A Ø6XØ18 SLUITRING	10 P RONDELLE DIN 9021A Ø6	10 PC WASHER DIN 9021A Ø6XØ18	10 st UNTERLEGSCHEIBE DIN 9021A Ø6XØ18
22	70.18710.000	10 st SLUITRING 8X25	10 p Ø8xØ25 RONDELLE	10 pc WASHER 8X25	10 st VERSCHUSS 8X25
23	70.19328.000	10 st ZESKANT TAPBOUT M10X75	10 p VIS DIN 933 M10X75	10 pc SCREW DIN 933 M10X75	10 st SCHRAUBE DIN 933 M10X75
24	70.19302.000	10 st ZESKANTTAPBOUT D933 M6X10	10 p BOULON DIN 933 M6x10	10 pc BOLT DIN 933 M6x10	10 st BOLZEN DIN 933 M6x10
25	70.19304.000	10 st D933 M6X16 ZESKANTTAPBOUT	10 p BOULON DIN 933 M6x16	10 pc BOLT DIN 933 M6x16	10 st BOLZEN DIN 933 M6x16
26	70.19305.000	10 st D933 M6X20 ZESKANTTAPBOUT	10 p BOULON DIN 933 M6x20	10 pc BOLT DIN 933 M6x20	10 st BOLZEN DIN 933 M6x20
27	70.19306.000	10 ST M6X25 ZESKANTTAPBOUT	10 p BOULON DIN 933 M6x25	10 pc BOLT DIN 933 M6x25	10 st BOLZEN DIN 933 M6x25
28	70.19311.000	10 st D933 M8X16 ZESKANTTAPBOUT	10 p BOULON DIN 933 M8x16	10 pc BOLT DIN 933 M8x16	10 st BOLT DIN 933 M8x16
29	70.19314.000	10 st ZESKANT TAPBOUT M8X30	10 p BOULON DIN 933 M8x30	10 pc BOLT DIN 933 M8x30	10 st BOLZEN DIN 933 M8x30
30	70.19316.000	10 st ZESKANT TAPBOUT M8X40	10 p BOULON DIN 933 M8X40	10 pc BOLT DIN 933 M8x40	10 st BOLZEN DIN 933 M8x40
31	70.19406.000	10 st ZESKANT MOER M10	10 p D934 M10 ECROU	10 pc NUT DIN 934 M10	10 st D934 M10 MUTTER
32	70.19410.000	10 st D934 M6 ZESKANTMOEREN	10 p ECROU DIN 934 M6	10 pc NUT DIN 934 M6	10 st MUTTER DIN 934 M6
33	70.19401.000	10 ST D934 M8 ZESKANTMOER 19401.0	10 P ECROU DIN 934 M8 19401.0	10 PC NUT DIN 934 M8 19401.0	10 ST MUTTER DIN 934 M8 19401.0
34	70.19502.000	10 st D939 M6X20 TAPEINDEN	10 p GOUJON DIN 939 M6x20	10 pc STUD DIN 939 M6x20	10 st STIFTSCHRAUBE DIN 939 M6x20
35	70.19511.000	10 st D939 M8X50 TAPEIND	10 p GOUJON DIN 939 M8x50	10 pc STUD DIN 939 M8x50	10 st STIFTSCHRAUBE DIN 939 M8x50
36	70.19712.000	10 st D963 M6X16 PLATV.SCHR.ZGS	10 p VIS DIN 963 M6x16	10 pc SCREW DIN 963 M6x16	10 st SCHRAUBE DIN 963 M6x16
37	70.19722.000	10 st D963 M6X60 PLATV.SCHR.ZGS *	10 p VIS DIN 963 M6x60	10 pc SCREW DIN 963 M6x60	10 st SCRAUBE DIN 963 M6x60
38	70.19701.000	10 st SCHROEF M8X25	10 p VIS M8X25	10 pc SCREW M8X25	10 st SCHRAUBE M8X25
39	70.19734.000	10 st D963 M8X35 PLATV.SCHR.ZGS#	10 p VIS DIN 963 M8x35	10 pc SCREW DIN 963 M8x35	10 st SCHRAUBE DIN 963 M8x35
40	70.19735.000	10 ST D963 M8X40 PLATV.SCHR.ZGS	10 p VIS M8X40	10 pc SCREW M8X40	10 st SCHRAUBE DIN 963 M8x20
41	03.19739.000	D963 M8X45 PLATV.SCHR.ZGS *	VIS DIN 963 M8X45	SCREW DIN 963 M8X45	SCHRAUBE DIN 963 M8X45
42	03.19736.000	D963 M8X50 PLATV.SCHR.ZGS *	VIS DIN 963 M8x50	SCREW DIN 963 M8x50	SCHRAUBE DIN 963 M8x50
43	70.20803.000	10 st D966 M6X20 BOLVERZ KK SCHROEF	10 p DIN 966 M6X20 VIS A METAUX	10 pc DIN 966 M6X20 SREW	10 st DIN 966 M6X20 SCHRAUBEN
44	70.20001.000	10 st ZELFB.MOER CLEVELOCK	10 p M6 ECROU CLEVELOCK	10 pc LOCKING NUT DIN 980 M6	10 st SICHERUNGSMUTTER DIN 980 M6
45	03.15821.392	DEUR 425CB/BM E7	DEUR 425CB/BM E7	DEUR 425CB/BM E7	DEUR 425CB/BM E7
46	03.24371.020	FRONT 550CB	FACADE 550CB	FRONT 550CB	FRONT 550CB ANTRACIET
47	03.25304.000	GELEID.STRIP 550CB LUCHTSCHUIF	PIECE DE GUIDAGE	GUIDE PLATE DRAUGHT CONTROL	GELEID.STRIP 550CB LUCHTSCHUIF
48	70.26101.041	4ST SET GLASBEV; 20X20MM	4PC SET FIXATION VITRE 20X20	4PC SET GLASS RETAINER 20X20	4ST SET GLAS BEHÄLTER 20X20
49	70.27026.043	GRENDEL 250/425/725 VERNIKKELD	LOQUET 250/425/725	LATCH 250/425/725	GRIFF 250/425/725

52	03.28010.020	HITTESCHILD RUG 500 (VERF)	PLAQUE DE PROTECTION DOS 500	HEATSHIELD	HITTESCHILD RUG 500 (VERF)
53	70.26063.000	26063.0 GLAS 550CB 410X291X4 R	26063.0 VITRE CERAMIQUE 550CB	26063.0 CERAMIC GLASS 550CB	26063.0 GLAS 550CB
54	03.37206.000	LUCHTDOORLAAT 500	CONDUIT D'AIR 500	SEC AIR DISTRIBUTION PLATE 500	LUFT PLATTE 500
56	03.37603.000	LUCHTKOKER SEC.LUCHT 700	BOITE D'AIR SECOND. 700	AIRDUCT SEC.AIR	LUFT KANAL 700
57	70.37606.000	LUCHTKOKER VUURKORF 500 37606.0	GARDE-BUCHES 500 37606.0	LOG RETAINER 500 37606.0	STEHROST 500 37606.0
58	02.37949.143	LUCHTSCHUIF BOVEN 550CB NIKKEL	LUCHTSCHUIF BOVEN 550CB NIKKEL	AIR CONTROL TOP 550CB	LUCHTSCHUIF BOVEN 550CB NIKKEL
59	70.37968.092	LUCHTSCHUIF ONDER 250/E7	REGLETTE D'AIR DESSOUS 250/E7	DRAFT CONTROL UNDER 250/E7	LUFT SCHIEBER UNTER 250/E7
61	70.56214.000	ONTASSINGSROOSTER 500 56214.0	GRILLE DE DECENDRAGE 500 56214.0	DE-ASHING GRATE 500 56214.0	ENTASSCHUNGSROST 500 56214.0
62	70.79922.000	Z422 : GLASVEZELKOORD 10 MM KOORD-10	S422 : JOINT FIBRE CERAMIQUE 10 MM KOORD-10	B422 : GLASS FIBER ROPE 10 MM KOORD-10	S422 : GLASFASER SCHNUR 10 MM KOORD-10
63	70.52219.092	POOT BOVEN 550CB/E7	PIED HAUT 550CB/E7	LEG UPPER 550CB/E7	FUSS OBEN 550CB/E7
64	70.52220.092	POOT ONDER 550CB/E7	PIED DESSOUS 550CB/E7	LEG UNDER 550CB/E7	FUSS UNTER 550CB/E7
65	70.58610.000	10 st SCHARNIERPEN Ø6X45	10 pc PIVOT AVEC TETE Ø6X45	10 pc CLEVIS PIN Ø6X45	10 st GEWINDESTIFT OHNE KOPF
66	70.13619.000	10 st BUSJE SLUITSTUK Ø10XØ6X8.5	10 p TUBE PIECE DE FERMETURE Ø10XØ6X8.5	10 pc BUSHING LATCH Ø10XØ6X8.5	10 st BÜCHSE VERSCHLUSS STÜCK Ø10XØ6X8.5
67	70.27226.020	SLT5-/01 KOUDE HAND ASBAK	SLT5-/01 MAIN FROIDE BAC A CENDRES3	SLT5-/01 COLD HAND ASHPAN	SLT5-/01 KALTE HAND ASCHENKASTE
68	70.28861.000	28861.0 STEENHOUDER 550CB	28861.0 TENEUR PIERRES REFRACTAIRES 550CB	28861.0 STONE SUPPORT 550CB	28861.0 STEIN BEHÄLTER 550CB
69	70.66511.000	STOOKROOSTER SAM 550	GRILLE 550	fire grate 550	ROST ZSTG. 550
70	03.69161.592	TOPPLAAT 425CB/GM E7	PLATEAU SUPERIEUR 425CB/GM E7	TOPPLAAT 425CB/GM E7	TOPPLATTE 425CB/GM E7
71	70.59209.000	TREKSCHEPJE 600	RACLOIR 600	SCRAPER 600	SCHÜREISEN 600
72	03.72301.000	U-STUK (DEKSELTREKKER)	U-PIÈCE TIROIR DE COUVERCLE	U-PIECE (COVER)	U-STÜCK (DECKELZIEHER)
73	70.76104.000	S76104.0 VLAMPLAAT 500 GEM.	S76104.0 DEFLECTEUR 500 MONTÉ	S76104.0 BAFFLE PLATE 500 ASSEMBLED	S76104.0 FLAMLEITPLATTE 500 GEM.
74	70.77035.020	77035.0 VUURKORF 550CB	77035.0 GARDE-BUCHES 550CB	77035.0 LOG RETAINER 550CB	77035.0 STEHROST 550CB
75	70.77333.000	77333.0 VUURVASTE STEEN 250	77333.0 REFRACTAIRE BRIQUE 250	77333.0 HEAT RESISTANT STONE 250	77333.0 FEUERFEST STEIN 250
76	03.79562.192	ZIJWAND L 425CB E7	ZIJWAND L 425CB E7	ZIJWAND L 425CB E7	ZIJWAND L 425CB E7
77	03.79563.192	ZIJWAND R 425CB/GM E7	PLAQUE LATERALE DROITE 425CB/GM E7	ZIJWAND R 425CB/GM E7	SEITENWAND R 425CB/GM E7
78	70.79870.000	SERVICE KIT 4.0M GLASVEZELKOORD 6MM - TU.SK6	SERVICE KIT 4.0M JOINT FIBRE CERAMIQUE 6MM - SK6	SERVICE KIT 4.0M GLASS FIBER ROPE 6MM -TU.SK6	SERVICE KIT 4.0M GLASFASER SCHNUR 6MM - TU.SK6
79	70.20360.000	10 st D7984 M6X16 LAGE CIL.KOP BIN.ZESK	10 p D7984 M6X16 BAS CIL.KOP BIN.ZESK	10 pc SCREW M6X16 D7984	10 st D7984 M6X16 LAGE CIL.KOP BIN.ZESK