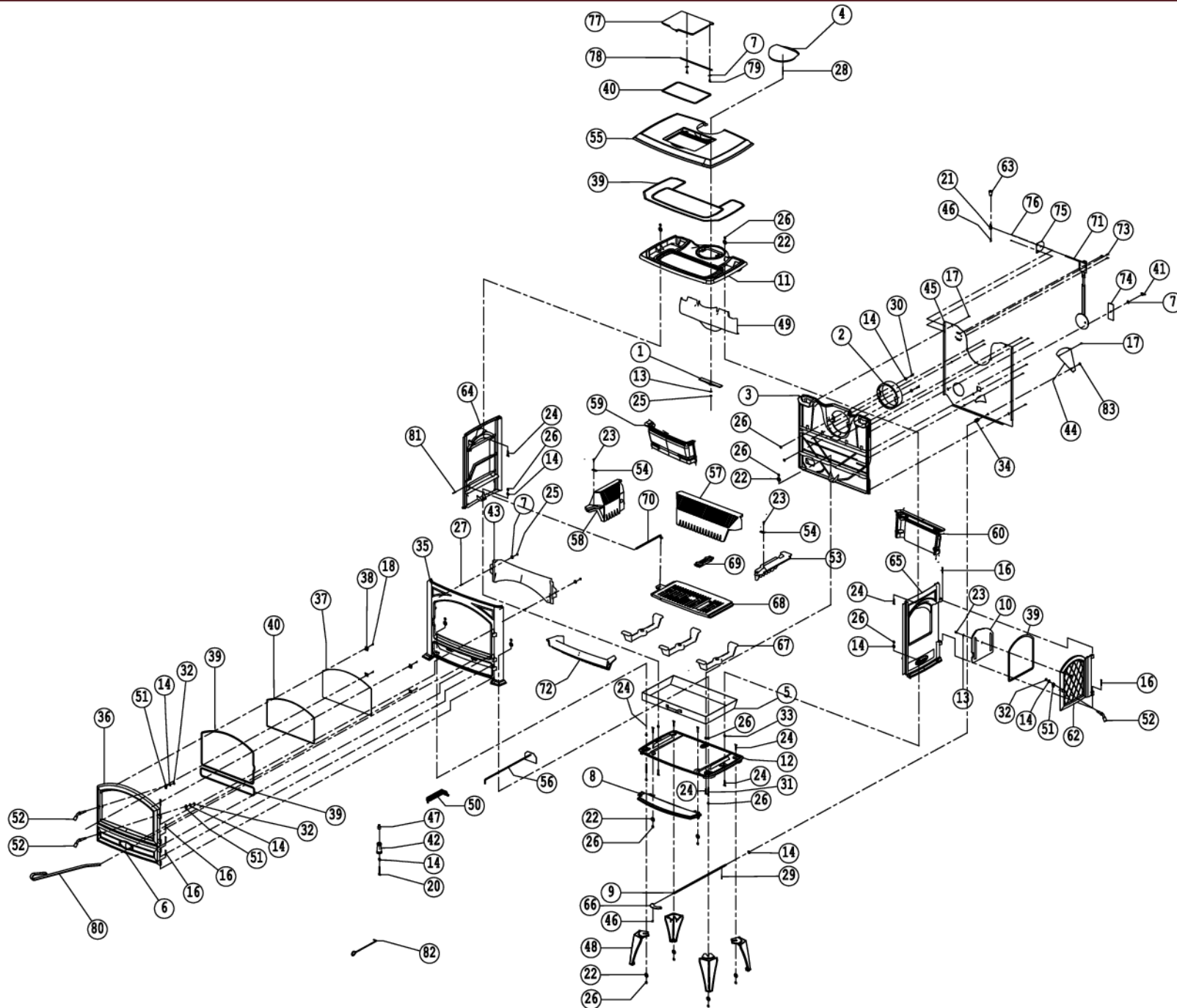




640GK



| | | | | | |
|----|--------------|--|--|---|--|
| 1 | 70.07216.000 | 317G/02 SLUITPLAATJE VOOR DEKSEL 152 300-17G | 317G/02 PLAQUETTE FERMETURE POUR COUVERCLE 300-17G | 317G/02 LOCKING PLATE FOR COVER 300-17G | 317G/02 VERSCHUSS PLATTE FÜR DECKEL 300-17G |
| 2 | 70.00338.092 | AANSLUITKRAAG 150MM INW E7 | BUSE INTÉRIEURE 150MM E7 | FLUE COLLAR 150MM E7 | ANSCHLUSSKRAGEN 150MM INNERE E7 |
| 3 | 03.02442.005 | ACHTERWAND 640CB | PLAQUE ARRIERE 640CB | BACK PLATE 640CB | RÜCKWAND 640CB |
| 4 | 70.03146.092 | AFDEKPLAAT 760/640 E7 | PLAQUE DE COUVERTE 760/640 E7 | COVER PLATE 760/640 E7 | ABDEK PLATTE 760/640 E7 |
| 5 | 70.05225.000 | ASLADE 640 CB | BAC A CENDRES 640 CB | ASH BOX 640 CB | ASCHENKASTEN 640 CB |
| 6 | 70.15888.092 | ASLADE DEUR 640CB E7 | PORTE DE CENDRIER 640CB E7 | ASH BOX DOOR 640CB E7 | ASCHE TÜR 640CB E7 |
| 7 | 70.18701.000 | 10 st D9021A Ø6XØ18 SLUITRING | 10 P RONDELLE DIN 9021A Ø6 | 10 PC WASHER DIN 9021A Ø6XØ18 | 10 st UNTERLEGSCHIEBE DIN 9021A Ø6XØ18 |
| 8 | 03.05621.092 | ASVANG 640CB EMAIL/MAJOLICA GROEN | Bavette 640CB/majolica vert | ASVANG 640CB EMAIL/MAJOLICA GROEN | ASCHELIPPE 640CB EMAIL/MAJOLICA GRÜN |
| 9 | 03.65442.300 | BEDIENINGSSTANG LUCHTSCHUIF 640CB | REGLETTE D'AIR | HANDLE AIRCONTROL 640CB | BEDIENUNGSGESTÄNGE LUFTREGLER 640CB |
| 10 | 70.08211.000 | BINNEN DEUR 640CB | PORTE INTERIEURE 640CB | INNER DOOR 640CB | INNEN TÜR 640CB |
| 11 | 03.08358.000 | BINNENTOPPLAAT 640CB | PLAQUE INTERIEURE 640CB | INNER TOPPLATE 640CB | INNEN PLATTE TOP 640CB |
| 12 | 03.09391.100 | BODEMPLAAT 640CB | BODEMPLAAT 640CB | BOTTOM PLATE 640CB | BODEN PLATTE 640CB |
| 13 | 70.16501.000 | 10 ST D125 Ø6XØ12 SLUITRING | 10 P RONDELLE D125 Ø6XØ12 | 10 PC WASHER D125 Ø6XØ12 | 10 ST D125 Ø6XØ12 UNTERLEGSCHIEBE |
| 14 | 70.16502.000 | 10 ST D125 Ø8XØ17 SLUITRING - 16502.0 | 10 PC RONDELLE Ø8XØ17 - 16502.0 | 10 PC WASHER D125 Ø8XØ17 - 16502.0 | 10 ST D125 Ø8XØ17 UNTERLEGSCHIEBE - 16502.0 |
| 17 | 70.18002.000 | 10 st D7516A M6X12 BOLCIL.KK.SNIJSCHR | 10 p SCREW DIN 7516A M6x12 | 10 pc SCREW DIN 7516A M6x12 | 10 st SCHRAUBE DIN 7516A M6x12 |
| 18 | 03.18101.041 | D7516D M5 *NT GEBRUIKEN* NU 03.19801.041 | VIS DIN 7516D M5x10 | SCREW DIN 7516D M5x10 | SCHRAUBE DIN 7516D M5x10 |
| 20 | 70.20307.000 | 10 st SCHROEF M8X50 | 10 p VIS M8X50 | 10 pc SCREW M8X50 | 10 st SCHRAUBE M8X50 |
| 21 | 03.74506.041 | VERBINDINGSSTUK KNOP | PIECE DE CONNECTION BOUTON | BINDPIECE BUTTON | VERBINDUNGSSTÜCK KNOPF |
| 22 | 70.18710.000 | 10 st SLUITRING 8X25 | 10 p Ø8xØ25 RONDELLE | 10 pc WASHER 8X25 | 10 st VERSCHUSS 8X25 |
| 23 | 70.19303.000 | 10 st D933 M6X12 GEZWART ZESKANTTAPBOUT | 10 p BOULON DIN 933 M6x12 | 10 pc BOLT DIN 933 M6x12 | 10 st BOLZEN DIN 933 M6x12 |
| 24 | 70.19315.000 | 10 st D933 M8x25 ZESKANTTAPBOUT | 10 p BOULON DIN 933 M8x35 | 10 pc BOLT DIN 933 M8x35 | 10 st BOLZEN DIN 933 M8x35 |
| 25 | 70.19410.000 | 10 st D934 M6 ZESKANTMOEREN | 10 p ECROU DIN 934 M6 | 10 pc NUT DIN 934 M6 | 10 st MUTTER DIN 934 M6 |
| 26 | 70.19401.000 | 10 ST D934 M8 ZESKANTMOER 19401.0 | 10 P ECROU DIN 934 M8 19401.0 | 10 PC NUT DIN 934 M8 19401.0 | 10 ST MUTTER DIN 934 M8 19401.0 |
| 27 | 70.19502.000 | 10 st D939 M6X20 TAPEINDEN | 10 p GOUJON DIN 939 M6x20 | 10 pc STUD DIN 939 M6x20 | 10 st STIFTSCHRAUBE DIN 939 M6x20 |
| 28 | 70.19515.000 | 10 st D939 M6X45 TAPEIND | 10 p GOUJON DIN 939 M6X45 | 10 pc STUD DIN 939 M6X45 | 10 st STUD DIN 939 M6X45 |
| 29 | 70.19610.000 | 10 st SPLITPEN 2,5X25 | 10 p CLAVETTE DIN 94 Ø2.5x25 | 10 pc SPLITPIN DIN 94 Ø2.5x25 | 10 st SPLINTE DIN 94 Ø2.5x25 |
| 30 | 70.19701.000 | 10 st SCHROEF M8X25 | 10 p VIS M8X25 | 10 pc SCREW M8X25 | 10 st SCHRAUBE M8X25 |
| 31 | 70.21722.000 | 10 ST D916 M8X60 STELSCH.BI.ZESK * | 10 P VIS D916 M8X60 | 10 PC SCREW D916 M8X60 | 10 ST D916 M8X60 |
| 32 | 70.20010.000 | 10 ST D980 M8 ZELFB.MOER CLEVELOCK 20010.0 | 10 P ECROU DE VERROUILLAGE DIN 980 M8 20010.0 | 10 PC LOCKING NUT DIN 980 M8 20010.0 | 10 ST SICHERUNGSMUTTER DIN 980 M8 20010.0 |
| 33 | 70.17102.000 | 10 st D439 M8 LAGE ZESKANTMOER - 17102.0 | 10 p ECROU DIN 439 M8 - 17102.0 | 10 pc NUT DIN 439 M8 -17102.0 | 10 st MUTTER DIN439 M8 - 17102.0 |
| 34 | 03.72606.000 | DRUKVEER 67LV1 | RESSORT | SPRING | FEDER |
| 35 | 03.24423.192 | 03.24416.106 FRONT 640GM EMAIL/MAJOLICA GROEN | 03.24416.106 FRONT 640GM EMAIL/MAJOLICA GROEN | 03.24416.106 FRONT 640GM EMAIL/MAJOLICA GROEN | 03.24416.106 FRONT 640GM EMAIL/MAJOLICA GROEN |
| 36 | 70.15887.092 | DEURSET 640CB E7 | PORTE COMPLETE 640CB E7 | DOOR COMPLETE 640CB E7 | TÜR COMPLETT 640CB E7 |
| 37 | 99.99999.990 | PRULLENBAK VERVALLEN ARTIKELNRS. | PRULLENBAK VERVALLEN ARTIKELNRS. | PRULLENBAK VERVALLEN ARTIKELNRS. | PRULLENBAK VERVALLEN ARTIKELNRS. |
| 38 | 70.26101.041 | 4ST SET GLASBEV; 20X20MM | 4PC SET FIXATION VITRE 20X20 | 4PC SET GLASS RETAINER 20X20 | 4ST SET GLAS BEHÄLTER 20X20 |
| 39 | 70.79869.000 | SERVICE KIT 6.5M GLASVEZELKOORD 8MM - SK | SERVICE KIT 6.5M JOINT FIBRE CERAMIQUE 8MM - SK | SERVICE KIT 6.5M GLASS FIBER ROPE 8 MM - SK | SERVICE KIT 6.5M GLASFABER SCHNUR 8MM - SK |
| 40 | 70.79870.000 | SERVICE KIT 4.0M GLASVEZELKOORD 6MM - TU.SK6 | SERVICE KIT 4.0M JOINT FIBRE CERAMIQUE 6MM - SK6 | SERVICE KIT 4.0M GLASS FIBER ROPE 6MM -TU.SK6 | SERVICE KIT 4.0M GLASFABER SCHNUR 6MM - TU.SK6 |
| 41 | 03.21206.000 | D315 M6 VLEUGELMOER * | ECROU A AILETTES DIN 315 M6 | WINGED NUT DIN 315 M6 | FLUEGELMUTTER DIN 315 M6 |
| 42 | 70.27507.000 | SET HOUTEN HANDVAT(ALLERLEI KACHELS+INSERTS) ZWART | SET POIGNÉE BOIS(POÊLES+INSERTS) NOIR | COMPLETE HANDLE WOOD(STOVES+INSERTS) BLACK | COMPLETT GRIFF HOLZ(ÖFEN+EINSATZ) SCHWARZ |
| 43 | 03.37355.020 | LUCHTGELEIDER 640CB ANTRACIET | LUCHTGELEIDER 640CB ANTRACIET | AIRDUCT 640CB | LUCHTGELEIDER 640CB ANTRACIET |
| 44 | 03.37977.000 | LUCHTSCHUIF 760CB | REGLETTE D'AIR | DRAFT CONTROL 760CB | LUFTREGLER 760CB |
| 45 | 02.37644.120 | LUCHTTUNNELPLAAT 640GM GELAST ANTRACIET | LUCHTTUNNELPLAAT 640GM GELAST ANTRACIET | LUCHTTUNNELPLAAT 640GM GELAST ANTRACIET | LUCHTTUNNELPLAAT 640GM GELAST ANTRACIET |
| 46 | 70.21701.000 | 10 st D916 M6X6 STELSCHR.BI ZESK - 21701.0 | 10 p VIS DIN 916 M6X6 - 21701.0 | 10 pc SCREW DIN 916 M6X6 - 21701.0 | 10 st GEWINDESTIFTE DIN 916 M6X6 - 21701.0 |
| 47 | 03.46527.043 | OPVULSTUK NIKKEL 450/750 *Z | ENTRETOISE NICKEL 450/750 | CONNECTION PIECE WOODEN HANDLE | SPACER NICKEL 450/750 *Z |
| 48 | 70.52244.092 | POOT 760CB E7 | PIED 760CB E7 | LEG 760CB E7 | FUSS 760CB E7 |

| | | | | | |
|----|--------------|--|--|--|--|
| 49 | 70.77909.000 | RECUPERATOR 640/760 | RECUPERATEUR 640/760 | HEAT EXCHANGER 640/760 | WÄRMEAUSTAUSCHER 640/760 |
| 50 | 70.27226.020 | SLT5-/01 KOUDE HAND ASBAK | SLT5-/01 MAIN FROIDE BAC A CENDRES3 | SLT5-/01 COLD HAND ASHPAN | SLT5-/01 KALTE HAND ASCHENKASTE |
| 51 | 70.64232.000 | sluittip 1900 64232.0 | PLAQUETTE FERMETURE 1900 64232.0 | locking lip 1900 64232.0 | VERSCHUSS LIPPE 1900 64232.0 |
| 52 | 70.64221.043 | 64221.0 SLUITSTUK 450/500/750 | 64221.0 PIECE DE FERMETURE 450/500/750 | 64221.0 LATCH 450/500/750 | 64221.0 VERSCHUSS STÜCK 450/500/750 |
| 53 | 70.77073.000 | VUURKORF RECHTS 640GM | GARDE-BUCHES DROITE 640GM | LOG RETAINER RIGHT 640GM | STEHROST RECHTS 640GM |
| 54 | 03.07222.000 | 2734 BVP KLEP-AS/VUURKORF | PLAQUETTE DE FIXATION CLAPETTE | ATTACHMENT PLATE DAMPER | BEFESTIGUNGSPLATTE KLAPPE |
| 55 | 70.69187.092 | TOPPLAAT 640GM E7 | PLAQUE SUPERIEURE 640GM E7 | TOP PLATE 640GM E7 | TOP PLATTE 640GM E7 |
| 56 | 70.59209.000 | TREKSCHEPJE 600 | RACLOIR 600 | SCRAPER 600 | SCHÜREISEN 600 |
| 57 | 70.77075.000 | VUURKORF ACHTER 640GM | GARDE-BUCHES ARRIERE 640GM | LOG RETAINER BACK 640GM | STEHROST HINTEN 640GM |
| 58 | 70.77074.000 | VUURKORF LINKS 640GM | GARDE-BUCHES GAUCHE 640GM | LOG RETAINER LEFT 640 GM | STEHROST LINKS 640GM |
| 59 | 70.13402.000 | BUNK640 KOLENBUNKER 640 GM MF | BUNK640 LA CUVETTE 640 GM MF | BUNK640 COAL-HOLD 640 GM MF | BUNK640 KOHLEBUNKER 640 GM MF |
| 60 | 70.13402.000 | BUNK640 KOLENBUNKER 640 GM MF | BUNK640 LA CUVETTE 640 GM MF | BUNK640 COAL-HOLD 640 GM MF | BUNK640 KOHLEBUNKER 640 GM MF |
| 62 | 70.15886.092 | VULDEUR 640CB E7 | PORTE A CHARGER 640CB E7 | LOADING DOOR 640CB E7 | FÜLLTÜR 640CB E7 |
| 63 | 70.33026.000 | KNP181 KNOP LUCHTSCHUIF | BOUTON REGLETTE D'AIR KNP181 | KNOB DRAFT CONTROL KNP181 | KNOPF LUFT SCHIEBER KNP181 |
| 64 | 03.79594.092 | ZIJWAND L 640CB EMAIL/MAJOLICA GROEN | PLAQUE LATERALE GAUCHE 640CB E7 | ZIJWAND L 640CB EMAIL/MAJOLICA GROEN | SEITENWAND L 640CB EMAIL/MAJOLICA GRÜN |
| 65 | 03.79595.092 | ZIJWAND R 640CB EMAIL/MAJOLICA GROEN | PLAQUE LATERALE DROITE 640CB E7 | ZIJWAND R 640CB EMAIL/MAJOLICA GROEN | SEITENWAND R 640CB EMAIL/MAJOLICA GRÜN |
| 66 | 70.27242.000 | HANDGREEP LUCHTSCHUIF | POIGNEE REGLETTE DAIR | HANDLE DRAFT CONTROL | GRIFF LUFT SCHIEBER |
| 67 | 70.56324.000 | ROOSTERHOUDER 640GM | SUPPORT GRILLE 640 GM | GRATE SUPPORT 640GM | ROST BEHÄLTER 640GM |
| 68 | 70.61114.000 | SCHUDROOSTER 640 | GRILLE DE DECENDRAGE 640 | RIDDLING GRATE 640 | RÜTTELROST 640 |
| 70 | 70.61314.000 | SCHUDSTANG 760 GM | TIGE DE DECENDRAGE 760GM | RIDDLING ROD 760GM | RÜTTELSTANGE 760GM |
| 71 | 70.68228.000 | THERMOSTAAT 640GM/760GM/TAI | THERMOSTAT 640GM/760GM/TAI | THERMOSTAT 640GM/760GM/TAI | THERMOSTAT 640GM/760GM/TAI |
| 72 | 70.77076.020 | VUURKORF VOOR 640GM | GARDE-BUCHES POUR 640GM | LOG RETAINER FRONT 640GM | STEHROST FÜR 640GM |
| 73 | 70.18413.000 | 10 st SCHROEF DIN 7981B 4,2x16 | 10 p D7981B 4.8X16 CIL.KK PL.SCHR * | 10 pc SCREW DIN 7981B 4.8X16 | 10 st SCHRAUBE DIN 4.8X16 |
| 74 | 03.37978.020 | LUCHTSCHUIF BRANDSTOFKEUZE 760GM ANTR. | LUCHTSCHUIF BRANDSTOFKEUZE 760GM ANTR. | LUCHTSCHUIF BRANDSTOFKEUZE 760GM ANTR. | LUCHTSCHUIF BRANDSTOFKEUZE 760GM ANTR. |
| 75 | 03.66096.002 | STEUN KNOP 760GM | APPUI POUR BOUTON 760GM | KNOB SUPPORT (numbers) | STÜTZE KNOPF 760GM |
| 76 | 03.18401.000 | D7981B 4,2X13 CIL.K.KOPSCHR. * | VIS DIN 7981B 4,2x13 | SCREW DIN 7981B 4,2x13 | SCHRAUBE DIN 7981B 4,2x13 |
| 77 | 70.15344.092 | VULDEKSEL 640GM E7 | COUVERCLE 640GM E7 | HOPPER LID 640GM E7 | FÜLLDECKEL 640GM E7 |
| 78 | 70.65443.000 | SCHARNIERSTANG 640GM | TIGE 640GM | HINGE PIN 640GM | SCHARNIERSTANGE 640GM |
| 79 | 70.16305.041 | 10 st SCHROEF M6X10 | 10 p VIS M6X10 | 10 pc SCREW M6X10 | 10 st SCHRAUBE M6X10 |
| 80 | 70.52103.071 | kolenpook gedompeld | tisonnier charbon | poker coal | kohlenhaken getaucht |
| 81 | 70.33043.043 | KNOP SCHUDSTANG 250 | BOUTON TIGE DE DECENDRAGE 250 | KNOB RIDDLING ROD 250 | KNOPF RÜTTELSTANGE 250 |
| 82 | 70.59202.043 | HAAK04 - POOK (MAZOUTHAAK) | HAAK04 - TISSONIER MAZOUT | HAAK04 - HANDLE MAZOUT | HAAK04 - POKER (HEIZÖLHAKEN) |
| 83 | 70.64608.000 | 10 st SNELBORGER A8 STARLOCK Z.KAP | 10 p RONDELLE A8 STARLOCK | 10 pc WASHER A8 STARLOCK | 10 st UNTERLEGSCHIEBE A8 STARLOCK |
| | 70.13402.000 | BUNK640 KOLENBUNKER 640 GM MF | BUNK640 LA CUVETTE 640 GM MF | BUNK640 COAL-HOLD 640 GM MF | BUNK640 KOHLEBUNKER 640 GM MF |