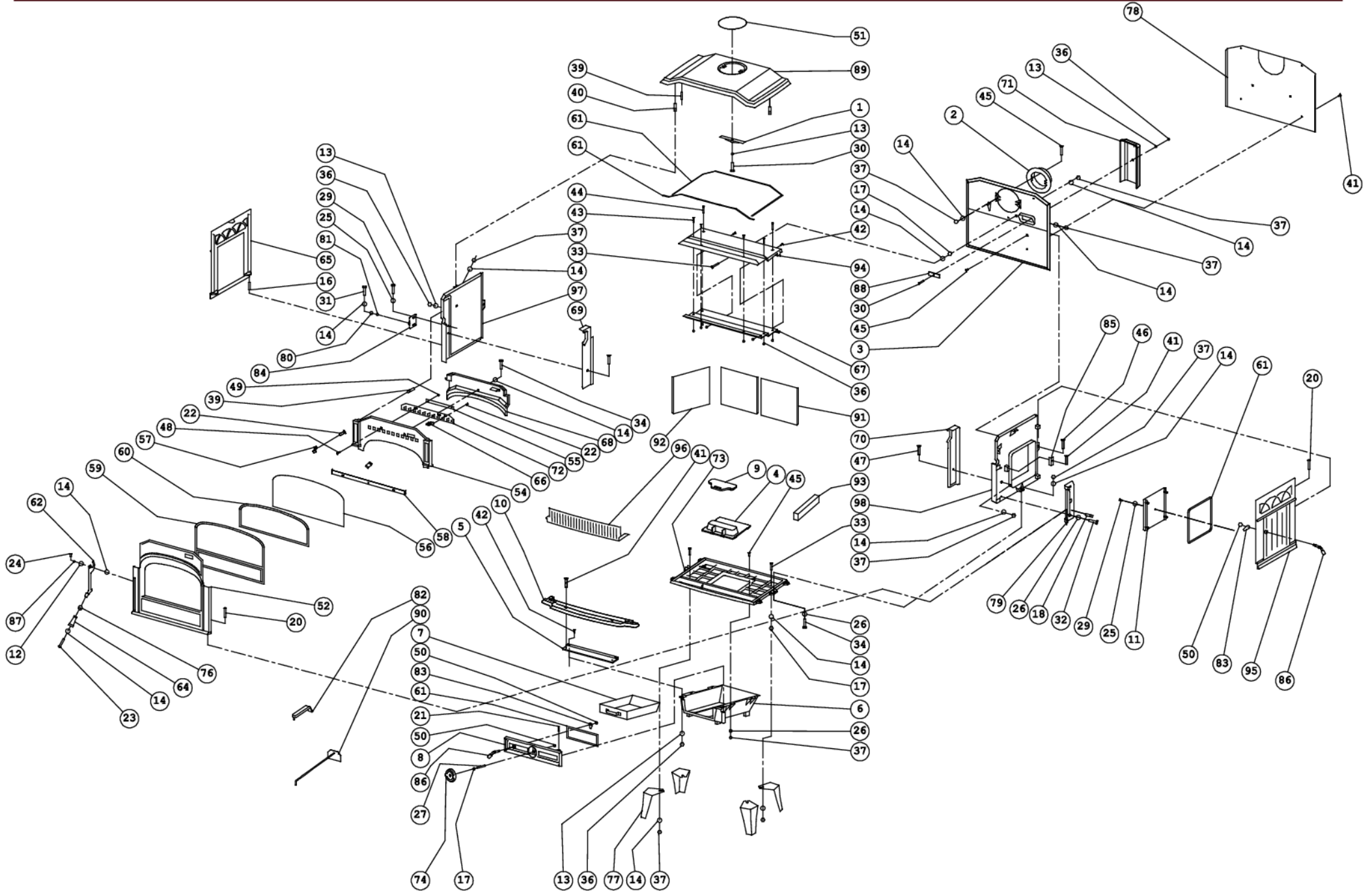




09.93221.000

30/10/08

750GH



1	70.07216.000	317G/02 SLUITPLAATJE VOOR DEKSEL 152 300-17G	317G/02 PLAQUETTE FERMETURE POUR COUVERCLE 300-17G	317G/02 LOCKING PLATE FOR COVER 300-17G	317G/02 VERSCHUSS PLATTE FÜR DECKEL 300-17G
2	70.00336.020	308B AANSLUITKRAAG Ø150 UITW. 300-8B	308B BUSELOT Ø150 EXTÉRIEUR 300-8B	308B FLUE COLLAR Ø150 OUTSIDE 300-8B	308B ANSCHLUSS STÜTZE Ø150 AUßERLICH 300-8B
3	03.02404.005	ACHTERWAND 700	PLAQUE ARRIERE 700	BACK	ACHTERWAND 700
4	70.03520.000	03520.0 AFDICHTPLAAT 750 GH	03520.0 PLAQUE DE FERMETURE 750 GH	03520.0 COVER PLATE 750 GH	03520.0 ABDICHTUNGS PLATTE 750 GH
5	03.04208.005	AFSLUITLIP 750	AFSLUITLIP 750	END STRIP	AFSLUITLIP 750
6	03.05005.005	ASBAKHOUDER 750	PORTEUR CENDRIER 750	ACHPAN HOLDER	ASCHEKASTENBEHÄLTER 750
7	70.05236.000	ASLADE PRELUDE	CENDRIER PRELUDE	ASHTRAY PRELUDE	ASCHEKASTEN PRELUDE
8	03.15709.005	ASLADEDEUR 750GH/750GM	PORTE CENDRIER	ASHBOX DOOR 750GH/750GM	ASCHEKASTENTÜR 750GH/750GM
9	70.05401.000	05401.0 ASLUIK	05401.0 VOLET CENDRIER	05401.0 DE-ASHING COVER	05401.0 ASCHE LUKE
10	03.05604.005	ASVANG 750	BAVETTE 750	ASHLIP	ASCHENFAENGER
11	70.08209.000	BINNENDEUR 750 GM/GH	PORTE INTERIEURE 750 GM/GH	INNER DOOR 750 GM/GH	INNEN TÜR 750 GM/GH
12	70.13612.000	10 ST BUSJE Ø12XØ8X3.5 13612.0	10 P TUBE Ø12XØ8X3.5 13612.0	10 PC BUSHING Ø12XØ8XØ3.5 13612.0	10 P BUECHSE Ø12XØ8XØ3.5 13612.0
13	70.16501.000	10 ST D125 Ø6XØ12 SLUITRING	10 P RONDELLE D125 Ø6XØ12	10 PC WASHER D125 Ø6XØ12	10 ST D125 Ø6XØ12 UNTERLEGSCHIEBE
14	70.16502.000	10 ST D125 Ø8XØ17 SLUITRING - 16502.0	10 PC RONDELLE Ø8XØ17 - 16502.0	10 PC WASHER D125 Ø8XØ17 - 16502.0	10 ST D125 Ø8XØ17 UNTERLEGSCHIEBE - 16502.0
15	03.17863.000	D1481 Ø4X16 SPANSTIFT *	GOUPILLE ELASTIQUE	SPRING PIN	D1481 Ø4X16 SPANSTIFT *
16	03.17852.000	D1481 Ø6X20 SPANSTIFT *	GOUPILLES ELASTIQUES DIN 1481 Ø6X20	SPRING PIN DIN 1481 Ø6X20	SPANNHULZE DIN 1481 Ø6X20
17	70.79866.000	Z366 : SLUITNOK PRELUDE	Z366 : TIGE DE FERMETURE PRELUDE	Z366 : LOCKING PIN PRELUDE	Z366 : SPERRBOLZEN PRELUDE
18	70.17210.000	10 st D551 M8X10 STELSCHR.ZGSN	10 p VIS DIN 551 M8x10	10 pc SCREW DIN 551 M8x10	10 st SCHRAUBE DIN 551 M8x10
19	03.17460.000	D571 6X30 HOUTDRAADBOUT ZESK. *	DIN 571 TIREFOND A BOIS	DIN 571 WOOD SCREW	DIN 571 HOLZSCHRAUBEN
20	70.17516.000	10 ST Ø5.9x35 RVS BOLKOPKLINKNAGEL - 17505.0	10 P RIVET Ø6X35 - 17505.0	10 PC RIVET Ø6X35 - 17505.0	10 ST RIVER Ø6X35 - 17505.0
21	70.17806.000	10 st D7343 Ø6X30 SPIRAALSTIFT	10 p SPANSCREW DIN 7343 Ø6X30	10 pc SPANNSTIFT DIN 7343 Ø6X30	10 st SPANNSTIFT DIN 7343 Ø6X30
22	70.18001.000	10 st D7516A M5X10 BOLCIL.KKOP SNIJSCH	10 p VIS DIN 7516A M5x10	10 pc SCREW DIN 7516A M5x10	10 st SCHRAUBE DIN 7516A M5x10
23	70.20307.000	10 st SCHROEF M8X50	10 p VIS M8X50	10 pc SCREW M8X50	10 st SCHRAUBE M8X50
24	70.18614.041	10 st SCHROEF DIN 7991 M8X20	10 p VIS DIN 7991 M8x20	10 pc SCREW DIN 7991 M8x20	10 st SCHRAUBE DIN 7991 M8x20
25	70.18701.000	10 st D9021A Ø6XØ18 SLUITRING	10 P RONDELLE DIN 9021A Ø6	10 PC WASHER DIN 9021A Ø6XØ18	10 st UNTERLEGSCHIEBE DIN 9021A Ø6XØ18
26	70.18710.000	10 st SLUITRING 8X25	10 p Ø8xØ25 RONDELLE	10 pc WASHER 8X25	10 st VERSCHUSS 8X25
27	70.21721.000	10 st STELSCHROEF M8X50	10 p VIS DIN 916 M8X50	10 pc SCREW DIN 916 M8X50	10 st GEWINDESTIFT DIN 916 M8X50
28	70.19303.000	10 st D933 M6X12 GEZWART ZESKANTTAPBOUT	10 p BOULON DIN 933 M6x12	10 pc BOLT DIN 933 M6x12	10 st BOLZEN DIN 933 M6x12
29	70.19304.000	10 st D933 M6X16 ZESKANTTAPBOUT	10 p BOULON DIN 933 M6x16	10 pc BOLT DIN 933 M6x16	10 st BOLZEN DIN 933 M6x16
30	70.19306.000	10 ST M6X25 ZESKANTTAPBOUT	10 p BOULON DIN 933 M6x25	10 pc BOLT DIN 933 M6x25	10 st BOLZEN DIN 933 M6x25
31	70.19311.000	10 st D933 M8X16 ZESKANTTAPBOUT	10 p BOULON DIN 933 M8x16	10 pc BOLT DIN 933 M8x16	10 st BOLT DIN 933 M8x16
32	70.19312.000	10 ST D933 M8X20 ZESKANTTAPBOUT	10 p BOULON DIN 933 M8x20	10 pc BOLT DIN 933 M8x20	10 st BOLZEN DIN 933 M8x20
33	70.19315.000	10 st D933 M8x25 ZESKANTTAPBOUT	10 p BOULON DIN 933 M8x35	10 pc BOLT DIN 933 M8x35	10 st BOLZEN DIN 933 M8x35
34	70.19316.000	10 st ZESKANT TAPBOUT M8X40	10 p BOULON DIN 933 M8X40	10 pc BOLT DIN 933 M8x40	10 st BOLZEN DIN 933 M8x40
35	03.19317.000	D933 M8X50 ZESKANTTAPBOUT *	BOULON DIN 933 M8x50	BOLT DIN 933 M8x50	BOLZEN DIN 933 M8x50
36	70.19410.000	10 st D934 M6 ZESKANTMOEREN	10 p ECROU DIN 934 M6	10 pc NUT DIN 934 M6	10 st MUTTER DIN 934 M6
37	70.19401.000	10 ST D934 M8 ZESKANTMOER 19401.0	10 P ECROU DIN 934 M8 19401.0	10 PC NUT DIN 934 M8 19401.0	10 ST MUTTER DIN 934 M8 19401.0
38	70.19502.000	10 st D939 M6X20 TAPEINDEN	10 p GOUJON DIN 939 M6x20	10 pc STUD DIN 939 M6x20	10 st STIFTSCHRAUBE DIN 939 M6x20
39	70.19504.000	10 st TAPEIND M6X30	10 p GOUJONS M6X30	10 pc GOUJONS M6X30	10 st STIFTSCHRAUBE M6X30
40	70.19508.000	10 st TAPEIND M8X25	10 p GOUJON DIN 939 M8X25	10 pc STUD DIN 939 M8X25	10 st STIFTSCHRAUBE DIN 939 M8X25
41	70.19711.000	10 st D963 M6X12 PLATV.SCHR.ZGS	10 p VIS DIN 963 M6x12	10 pc SCREW DIN 963 M6x12	10 st SCHRAUBE DIN 963 M6x12
42	70.19712.000	10 st D963 M6X16 PLATV.SCHR.ZGS	10 p VIS DIN 963 M6x16	10 pc SCREW DIN 963 M6x16	10 st SCHRAUBE DIN 963 M6x16
43	70.19717.000	10 st D963 M6X30 PLATV.SCHR.ZGS	10 p D963 M6X30 PLATV.SCHR.ZGS	10 pc SCREW DIN 963 M6x30	10 st SCHRAUBE DIN 963 M6x30
44	70.19719.000	10 st D963 M6X40 PLATV.SCHR.ZGS	10 p VIS DIN 963 M6x40	10 pc SCREW DIN 963 M6x40	10 st SCHRAUBE DIN 963 M6x40
45	70.19732.000	10 st D963 M8X20 PLATV.SCHR.ZGS	10 p VIS DIN 963 M8x20	10 pc SCREW DIN 963 M8x20	10 st SCHRAUBE DIN 963 M8x20
46	70.19734.000	10 st D963 M8X35 PLATV.SCHR.ZGS#	10 p VIS DIN 963 M8x35	10 pc SCREW DIN 963 M8x35	10 st SCHRAUBE DIN 963 M8x35

47	03.19736.000	D963 M8X50 PLATV.SCHR.ZGS *	VIS DIN 963 M8x50	SCREW DIN 963 M8x50	SCHRAUBE DIN 963 M8x50
48	03.20804.000	D966 M6X25 BOLVERZ.KK.SCHR *	VIS DIN 966 M6X25	SCREW DIN 966 M6X25	SCHRAUBE DIN 966 M6X25
49	70.20001.000	10 st ZELFB.MOER CLEVELOCK	10 p M6 ECROU CLEVELOCK	10 pc LOCKING NUT DIN 980 M6	10 st SICHERUNGSMUTTER DIN 980 M6
50	70.20010.000	10 ST D980 M8 ZELFB.MOER CLEVELOCK 20010.0	10 P ECROU DE VERROUILLAGE DIN 980 M8 20010.0	10 PC LOCKING NUT DIN 980 M8 20010.0	10 ST SICHERUNGSMUTTER DIN 980 M8 20010.0
51	70.15339.020	DEKSEL TOPPLAAT 750	COUVERCLE PLAQUE SUPERIEURE 750	COVER TOPPLATE 750	DECKEL TOP PLATTE 750
52	70.15708.020	15708.0 DEUR 750 GM/GH	15708.0 PORTE 750 GM/GH	15708.0 DOOR 750 GM/GH	15708.0 TÜR 750 GM/GH
53	70.19701.000	10 st SCHROEF M8X25	10 p VIS M8X25	10 pc SCREW M8X25	10 st SCHRAUBE M8X25
54	03.24348.205	FRONT 750GH/750GM	FACADE 750GH/GM	FRONT PLATE	FRONT 750GH/750GM
55	03.25302.000	GELEIDINGSSTRIP 750GH/GM	PIECE DE GUIDAGE	GUIDE	FÜHRUNGSBAND 750GH/GM
56	70.26036.000	26036.1 GLAS 700/750 495X252X4R	26036.1 VITRE 700/750 495X252X4R	26036.1 GLASS 700/750 495X252X4R	26036.1 GLAS 700/750 495X252X4R
57	70.26107.000	26107.1 4 ST GLASBEVESTIGING BOVEN 700	26107.1 4 P FIXATION DE VITRE 700	26107.1 4 PC GLASS RETAINER 700	26107.1 4 ST GLAS BEHÄLTER 700
58	70.26108.000	26108.0 GLASBEVESTIGING ONDER 700	26108.0 FIXATION DE VITRE DESSOUS 700	26108.0 GLASS RETAINER UNDER 700	26108.0 GLAS BEHÄLTER UNTER 700
59	70.79922.000	Z422 : GLASVEZELKOORD 10 MM KOORD-10	S422 : JOINT FIBRE CERAMIQUE 10 MM KOORD-10	B422 : GLASS FIBER ROPE 10 MM KOORD-10	S422 : GLASFASER SCHNUR 10 MM KOORD-10
60	70.79870.000	SERVICE KIT 4.0M GLASVEZELKOORD 6MM - TU.SK6	SERVICE KIT 4.0M JOINT FIBRE CERAMIQUE 6MM - SK6	SERVICE KIT 4.0M GLASS FIBER ROPE 6MM -TU.SK6	SERVICE KIT 4.0M GLASFABER SCHNUR 6MM - TU.SK6
61	70.79869.000	SERVICE KIT 6.5M GLASVEZELKOORD 8MM - SK	SERVICE KIT 6.5M JOINT FIBRE CERAMIQUE 8MM - SK	SERVICE KIT 6.5M GLASS FIBER ROPE 8 MM - SK	SERVICE KIT 6.5M GLASFABER SCHNUR 8MM - SK
62	70.27218.020	S27218.0 GRENDEL 750/10-SERIE	S27218.0 LOQUET 750/10-SERIE	S27218.0 LATCH 750/10-SERIE	S27218.0 GRIFF 750/10-SERIE
63	03.33018.100	GRENDELKNOP *Z	BOUTON LOQUET	KNOP	GRENDELKNOP *Z
64	70.27507.000	SET HOUTEN HANDVAT(ALLERLEI KACHELS+INSERTS) ZWART	SET POIGNÉE BOIS(POÊLES+INSERTS) NOIR	COMPLETE HANDLE WOOD(STOVES+INSERTS) BLACK	COMPLETT GRIFF HOLZ(ÖFEN+EINSATZ) SCHWARZ
65	70.28022.020	28022.0 HITTESCHILD 750	28022.0 PLAQUE DE PROTECTION 750	28022.0 HEAT SHIELD 750	28022.0 HITZ SCHILD 750
66	03.33012.005	KNOP LUCHTSCHUIF BOVEN 500	BOUTIN REGLLETTE D'AIR DESSUSE	KNOB DRAFT CONTROL UPPER 500	KNOPF LUFTSCHIEBER OBEN 500
67	70.76116.000	VLAMPLAAT 750GH GEMONTEERD	DEFLECTEUR 750GH ASSEMBLÉ	BAFFLE PLATE 750GH ASSEMBLED	FLAMMLEITPLATTE 750GH MONTIERT
68	03.37327.002	LUCHTGELEIDER 750GH/750GM	CONDUCTEUR D'AIR	AIR DEFLECTOR	LUCHTGELEIDER 750GH/750GM
69	03.37604.000	LUCHTKOKER LINKS 700	BOITE D'AIR GAUCHE 700	AIRDUCT LEFT	LUFTSCHACHT LINKS 700
70	03.37605.000	LUCHTKOKER RECHTS 700	BOITE D'AIR DROITE 700	AIRDUCT RIGHT	LUFTSCHACHT RECHTS 700
71	03.37603.000	LUCHTKOKER SEC.LUCHT 700	BOITE D'AIR SECOND. 700	AIRDUCT SEC.AIR	LUFT KANAL 700
72	03.37936.000	LUCHTSCHUIF BOVEN 750H/750MC	REGLLETTE D'AIR DESSUS	DRAFT CONTROL	LUFTREGLER OBEN 750H/750MC
73	03.09317.200	O09317 BODEMPLAAT 750	BASE 750	BOTTOM PLATE	O09317.0 BODENPLATTE 750
74	70.37921.020	O37921.0 LUCHTSCHUIF ASLADE 500	O37921.0 REGLLETTE D'AIR BAC A CENDRES 500	O37921.0 DRAFT CONTROL ASH BOX 500	O37921.0 LUFT SCHIEBER ASCHENKASTEN 500
75	70.16201.000	10 st SLUITRING 6X25	10 p RONDELLE 6X25	10 pc WASHER 6X25	10 st VERSCHUSS 6X25
76	03.46527.041	OPVULSTUK GEZWART 450/750 *Z	CONNECTION PIÈCE	CONNECTOR PIECE	TEIL FUER TUERGRIFF
77	70.52203.020	52203.0 POOT 700	52203.0 PIED 700	52203.0 LEG 700	52203.0 FUSS 700
78	03.28009.100	RUGSCHILD 700/750	PLAQUE DE PROTECTION 700	HEATSHIELD	RUGSCHILD 700/750
79	70.58403.000	58403.0 SCHARNIERLIJST 700	58403.0 PAUMELLE 700	58403.0 HINGE BRACKET 700	58403.0 SCHARNIERLISTE 700
80	70.13617.000	SET SLUITING 750/10 SERIE/20 SERIE	SET FERMETURE	SET LOCKING	SET VERSCHUSS
81	70.13617.000	SET SLUITING 750/10 SERIE/20 SERIE	SET FERMETURE	SET LOCKING	SET VERSCHUSS
82	70.27226.020	SLT5-/01 KOUDE HAND ASBAK	SLT5-/01 MAIN FROIDE BAC A CENDRES3	SLT5-/01 COLD HAND ASHPAN	SLT5-/01 KALTE HAND ASCHENKASTE
83	70.64220.000	SLUITLIP DEUR	PLAQUETTE FERMETURE	LOCKING LIP	VERSCHUSS LIPE
84	70.64002.000	64002.0 SLUITPLAAT 700	64002.0 PLAQUETTE FERMETURE 700	64002.0 LOCKING PLATE 700	64002.0 VERSCHUSS PLATTE 700
85	70.64005.000	64005.0 SLUITPLAAT 750 ZIJDEUR	64005.0 PLAQUETTE FERMETURE 750	64005.0 LOCKING PLATE 750	64005.0 VERSCHUSS PLATTE 750
86	70.64221.041	SLUITSTUK 450/500/750 ZWART 64221.0	PIECE DE FERMETURE 450/500/750/NOIRE 64221.0	CLOSING BREECH 450/500/750 ZWART 64221.0	VERSCHLUSS STÜCK 450/500/750 SCHWARZ 64221.0
87	70.64611.000	10 st SNELBORGER - 64611.0	10 pc RONDELLE A11 STARLOCK - 64611.0	10 pc WASHER A11 STARLOCK - 64611.0	10 st UNTERLEGSCHIEBE A11 STARLOCK - 64611.0
88	03.66705.000	STRIP 700 LUCHTDOORLAAT	BANDE	STRIP	STREIFEN
89	70.69116.020	69116.0 TOPPLAAT 750	69116.0 PLAQUE SUPERIEURE 750	69116.0 TOP PLATE 750	69116.0 TOPPLATTE 750
90	70.59209.000	TREKSCHEPJE 600	RACLOIR 600	SCRAPER 600	SCHÜREISEN 600
91	70.77353.000	77328.0 VERMICULIET STEEN ACHTER 750	77328.0 BRIQUE ARRIERE 750	77328.0 STONE BEHIND 750	77328.0 STEIN HINTEN 750
92	70.77352.000	77327.0 STEEN VERMICULIET LINKS 750	77327.0 BRIQUE VERMICULITE GAUCHE 750	77327.0 STONE VERMICULITE LEFT 750	77327.0 STEIN VERMICULIET LINKS 750

93	70.77351.000	STEEN VERMICULIET ONDER DEUR 750	BRIQUE VERMICULITE DESSOUS PORTE 750	STONE VERMICULITE UNDER DOOR 750	STEIN VERMICULIET UNTER TÜR 750
94	70.76116.000	VLAMPLAAT 750GH GEMONTEERD	DEFLECTEUR 750GH ASSEMBLÉ	BAFFLE PLATE 750GH ASSEMBLED	FLAMMLEITPLATTE 750GH MONTIERT
95	70.15837.020	S15837.0 VULDEUR 750	S15837.0 PORTE A CHARGER 750	S15837.0 LOADING DOOR 750	S15837.0 FÜLLTÜR 750
96	70.77008.020	VUURKORF 700	GARDE-BUCHES 700	LOG RETAINER 700	STEHROST 700
97	03.79526.105	ZIJWAND LINKS 750	PLAQUE LATERAL GAUCHE	SIDE	SEITENWAND LINKS 750
98	03.79570.105	ZIJWAND MET VULOPENING 750	COTE 750 AVEC PORTE A CHARGER	SIDE	SEITENWAND MIT NACHFÜLLÖFFNUNG 750